

# APPLICATION DATA SHEET



**ENVIROGRAF®**

AP110-Conduit Sleeve-09-2018

Product Number: 110

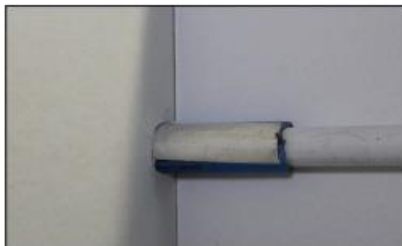
## Firoblok® Intumescent Conduit Sleeves

### Description:

An intumescent sleeve made the same size as 20mm and 25mm conduit so that it will fit into sockets or BESA Boxes.

### Application:

Firoblok® intumescent sleeves are fitted in place of plastic conduit where it would pass through a fire rated wall or ceiling. They are made to the same size as standard 20mm and 25mm conduit so that they fit into sockets or BESA boxes.



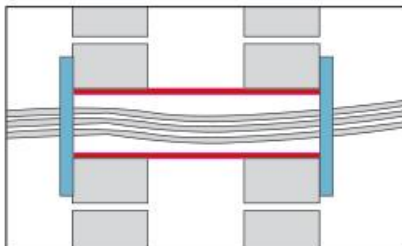
**FIROBLOK CONDUIT SLEEVE  
FITTED INTO A 20MM COUPLING**



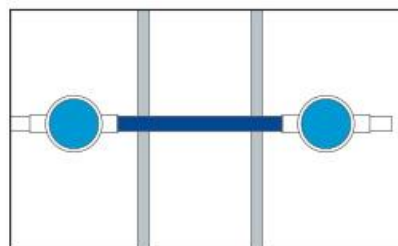
**FIROBLOK CONDUIT SLEEVE  
FITTED INTO A 20MM BESA BOX**



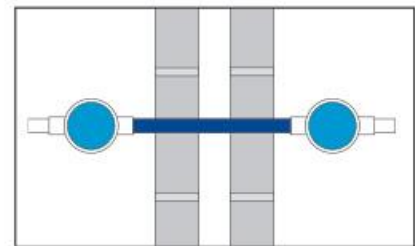
**FIROBLOK CONDUIT SLEEVE  
FITTED INTO A 25MM BESA BOX**



**CABLE PROTECTION IN HOLLOW WALLS  
INCLUDING SMOKE SEALS**



**FIROBLOK CONDUIT SLEEVE  
FITTED INTO A HOLLOW DRY WALL**



**FIROBLOK CONDUIT SLEEVE  
FITTED INTO A BLOCK CAVITY WALL**