



**An excellent gypsum-based fire barrier and a physically strong barrier in floors where personnel may occasionally be present.**

### Description

Firetherm Intucompound is a dry powder mix formed of inorganic binders, lightweight aggregates and stable additives. The product does not contain fibres or asbestos and is halogen free.

### Specifications

20 kg bag

Mix rate 2:1 or 3:1 (with water)

3.5 bags per m<sup>2</sup> at 100 mm depth

### Acoustic Capability

Up to 52 dB.

### Load Capability

Only at 100 mm thickness or greater. Consult Firetherm Technical for details.

### Fire Testing

- Tested at Exova BM Trada to BS EN 1366-3/4
- Tested at Exova Warrington Fire to BS 476 Pt 22
- Third party accredited by Exova Warrington Fire, certificate number CF 579



### Load Test

EOTA TR001 hard body impact up to 1.3 kg at various heights.

Soft body impact to 50 kg at various heights  
Concentrated Load up to 1000 kg.

### Maximum Openings

- Maximum wall opening without support 1100 x 1100 mm or 1.21 m<sup>2</sup>
- Maximum floor opening without support 1100 x 1100 mm or 1.21 m<sup>2</sup>
- Maximum continuous span without support 300 mm x infinite length
- Maximum continuous span with support 2000 mm x infinite length

Larger spans can be achieved under the guidance of a structural engineer.

### Features

- Good workability
- Easy to mix with good product flow
- Exceptional yield
- Service capable
- Air pressure tested up to 2000 Pa

### Applications

Intucompound is used to provide both an excellent fire barrier and a physically strong barrier in floors where personnel may occasionally be present. It may also be used within walls and in situations where the restraint of dampers or ducting is not possible using conventional methods. Advice from damper manufacturer must be sought.

Intucompound is recommended for use in dry internal conditions, though can be made water resistant with application of suitable coating at full cure. Suitability to pipe material type should be ensured prior to application of product.

### Typical Service Types

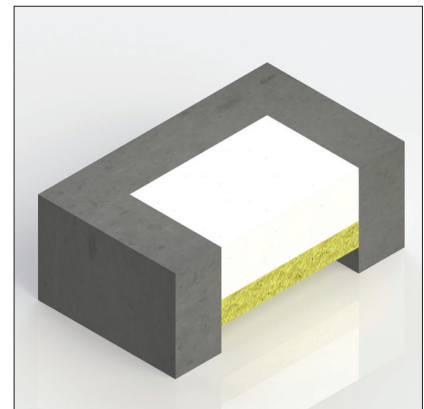
- Static joint seals
- Floor seals
- Wall seals
- Load capable seals

May also be used for fire and smoke sealing around cables, steel pipes, copper pipes, cable trays, combustible pipes, dampers and ducting. A soft joint should be used around any pipe that is likely to fracture due to thermal expansion.

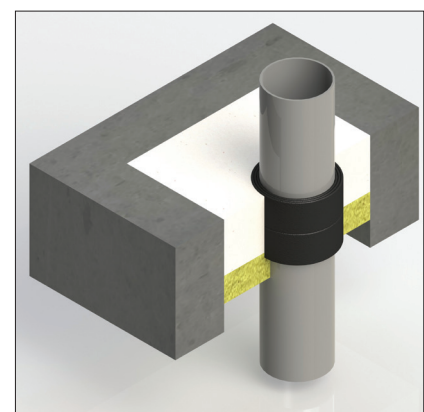
### Installation

After mixing, the product expands slightly to bond with surrounding substrates and ensure an excellent seal around service penetrants. Intucompound achieves full cure in 30 days, but has been tested to be load-capable after 50 hours. Intucompound air cures and should not be covered during the curing process.

### Typical Details



Intucompound in concrete floor aperture



Intucompound with combustible pipe and intumescent wrap

Firetherm Intumescent & Insulation Supplies Limited

Unit F Acorn Industrial Park, Crayford Road, Crayford, Kent DA1 4FT

Phone: 01322 551010 Fax: 01322 552727 Email: sales@firetherm.com www.firetherm.com

This data sheet offers guidance related to fire testing results and does not offer methodology of the installation of the product. Suitability of this product and its usage to substrate type, service type and fire requirement must be confirmed before installation commences. A specific detail relevant to installation must be requested. Firetherm recommend that all fire stopping products should be installed by a third party accredited fire stopping contractor or competent person. Full application details and methodology instructions should be requested before installation of this product commences. Standard terms and conditions apply at all times.

